



ENERGY

LightBridge™

High performance double glazing

LightBridge™ is our residential range of high performance insulating glass units (IGU) specifically designed to balance the benefits of high levels of natural light transmission with outstanding levels of thermal insulation and overall energy efficiency.

Playing a key role in managing both the heat flowing in and the heat flowing out of the glazed elements of the building, LightBridge™ helps to make your home cooler in summer and warmer in winter whilst allowing the room to bathe in very high levels of natural light.

LightBridge™ is ideal for use in fully framed windows and doors in detached residential and low-rise multi-residential building projects.

Features and Benefits

- Exceptionally low U Value (high insulation factor) for a residential glazing product.
- Balance of high light transmission with mid-range solar control.
- Combine with the VFloat™ toned range for greater solar control levels.
- For added acoustic performance, consider upgrading to LightBridge next™.



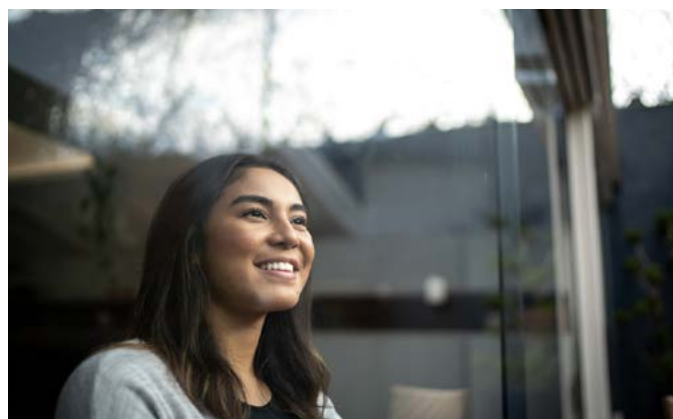
Considerations

Installation

- Thermal assessment may be required for lower SHGC variants.
- Ensure coating surface is identified and oriented for optimal performance.

Processing

- Simple shapes only.



Sectors

- Residential
 - Low rise multi-residential buildings
 - Single dwellings

Applications

- Windows
- Doors

How to Specify

- **Select glass processor**
Viridian Glass
- **Select glass name**
LightBridge™
- **Select tone & thickness**
Custom sizes available, consult Viridian.
- **Select processes**
Insulated glazed unit.
- **Select spacer**
 - Warm Edge (Standard)
 - Aluminium

Performance Data

Product Name	Outside Glass	Inside Glass	Nominal Thickness (mm)	VLT (%)	U Value	SHGC	Selectivity
LightBridge™ Clear	VFloat™ Clear	LightBridge™	4+12+4	80	1.40	0.59	1.36
LightBridge™ Clear	VFloat™ Clear	LightBridge™	5+12+5	78	1.40	0.56	1.39
LightBridge™ Clear	VFloat™ Clear	LightBridge™	6+12+6	78	1.40	0.55	1.42
LightBridge™ Clear	VFloat™ Clear	LightBridge™	8+12+8	76	1.40	0.52	1.46
LightBridge™ Light Grey	VFloat™ Light Grey	LightBridge™	5+12+5	60	1.40	0.44	1.36
LightBridge™ Light Grey	VFloat™ Light Grey	LightBridge™	6+12+6	56	1.40	0.42	1.33
LightBridge™ Grey	VFloat™ Grey	LightBridge™	4+12+4	49	1.40	0.40	1.23
LightBridge™ Grey	VFloat™ Grey	LightBridge™	5+12+5	42	1.40	0.36	1.17
LightBridge™ Grey	VFloat™ Grey	LightBridge™	6+12+6	37	1.40	0.32	1.16

Note: All performance data is determined using LBL window 7 software. NFRC 100 - 2010 conditions have been used. Glass surfaces are counted from the exterior to the interior of the building. Refer to Viridian Performance Data for more values.

LightBridge™ is a trademark of Viridian Glass Pty Ltd.